



www.4xmd.com

Xtracted Manufacturing Documents

3D Annotated CAD DATA at your fingertips

You must have Adobe® Reader® 8.1 or greater to view the 3D features.

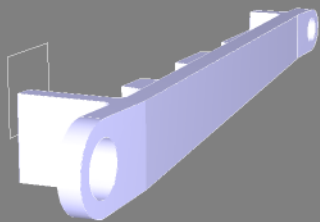
[Click here](#) to get the latest free Adobe® Reader®



[Click here](#) for a tutorial on how to use and Xtract data from this 3DXMD for Manufacturing and Inspection.



See the Step203 file attached to this document by clicking the paper clip icon on the bottom left corner



- 001 Bracket_Shock\Approval Status.1\Document Rev
NLG_10020-1 Rev A
- 002 Bracket_Shock\Approval Status.1>Status
Approved
- 003 Bracket_Shock\Approval Status.1>Status Date
4-20-2006
- 004 Bracket_Shock\Standard Notes:.1\5SN0000007644
5SN0000007644
- 005 Bracket_Shock\Standard Notes:.1\5SN0000007407
5SN0000007407
UNLESS OTHERWISE SPECIFIED, DIMENSIONS ARE IN INCHES.
- 006 Bracket_Shock\Standard Notes:.1\5SN0000007409
5SN0000007409
DIMENSIONING AND TOLERANCING PER ASME Y14.5M-1994.
- 007 Bracket_Shock\Standard Notes:.1\5SN0000007410
5SN0000007410
DIMENSIONS AND SURFACE TEXTURE DESIGNATIONS APPLY BEFORE PLATING
OR FINISH COATING UNLESS OTHERWISE NOTED.
- 008 Bracket_Shock\Standard Notes:.1\5SN0000007471
5SN0000007471
THE 3D GEOMETRY CONTAINED IN THE CATIA DATASET IS MODELED AT
FULL SCALE AND AT THE NOMINAL CONDITION.
- 009 Bracket_Shock\Standard Notes:.1\5SN0000007995
5SN0000007995
THE CATIA DATA SET CONTAINING THE 3D GEOMETRY, DIMENSIONS,
TOLERANCES, AND ANNOTATION ALONG WITH ITS RELATED DATA SPECIFY
THE COMPLETE PRODUCT DEFINITION.
- 010 Bracket_Shock\Standard Notes:.1\5SN0000007996
5SN0000007996
DATA SET PER ASME Y14.41-2003.
- 011 Bracket_Shock\Part Notes:.1\5PR0000002090
5PR0000002090

012 Bracket_Shock\Part Notes:.1\5SN0000007968

5SN0000007968

FOR FEATURES NOT SPECIFICALLY DIMENSIONED AND/OR TOLERANCED ON PRODUCT DEFINITION DATASETS: LINEAR VALUES WILL BE INTERROGATED TO TWO DECIMAL PLACES AND HAVE A TOLERANCE OF +/- .0300, EXCEPT THICKNESS WILL BE INTERROGATED TO THREE DECIMAL PLACES AND HAVE A TOLERANCE OF +/- .0100. ANGLES WILL BE INTERROGATED TO ONE DECIMAL PLACE AND HAVE A TOLERANCE OF +/- 2 DEGREE. NOTE THAT CHAINING VALUES IS NOT ALLOWED

013 Bracket_Shock\Part Notes:.1\5PR0000002518

DEBURR ALL SHARP CORNERS AND EDGES

014 Bracket_Shock\Part Notes:.1\5PR0000001115

5PR0000001115

015 Bracket_Shock\Material Description:.1\MR112D448P2

AL 7075-T651

016 Bracket_Shock\Annotation Notes:\FL1

FL1

017 Bracket_Shock\Annotation Notes:\FL2

FL2

=====
Body = PartBody

Volume = 333.234in³

Surface Area = 959.065in²
=====